



# Pelassa



ROMANTIC WINES OF PIEDMONT

## Birbet

*Grape variety:* 100% Brachetto.

*Vine-Training system and density:* Guyot, 4800 vines per hectare.

*Altitude:* 330 m above sea level.

*Harvest time:* : 01<sup>th</sup>/10<sup>th</sup> of September.

*Fermentation:* about 4 days, at 16°C.

*Characteristics:* ruby red with violet shades with a persistent perlage. The bouquet remind strawberries, raspberries and blackberries. It is sweet, armonich with a nice acid length.

*Food pairing:* it is wine to be drunk at the end of the meal with dessert or alone. Interesting combination with ice cream and syrupy peach.

*Packaging information*

Code EAN/bottle: **8033564390074**

Code EAN/case: **8033564390579**

Cod. customs: **22 04 3010**

Bottles per case: **6**

Cases per pallet 80x120: **95 = 19 x 5**

Dimensions case (cm): (l) **26,5** x (w) **17,5** x (h) **31**

Glass weight (g): **500**

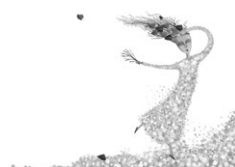
Case weight (kg): **7,9**

*Enjoy it while listening to*

JACQUES

OFFENBACH

*Les contes d'Hoffmann*



Copyright © 2012 Azienda Agricola Daniele Pelassa. All Rights Reserved

**Azienda Agricola Daniele Pelassa**

Borgata Tucci, 43 - 12046 Montà d'Alba (CN) ITALIA - tel. e fax +39 0173.971312  
P.iva 02915690040 skype: pelassa.daniele pelassa@pelassa.com www.pelassa.com